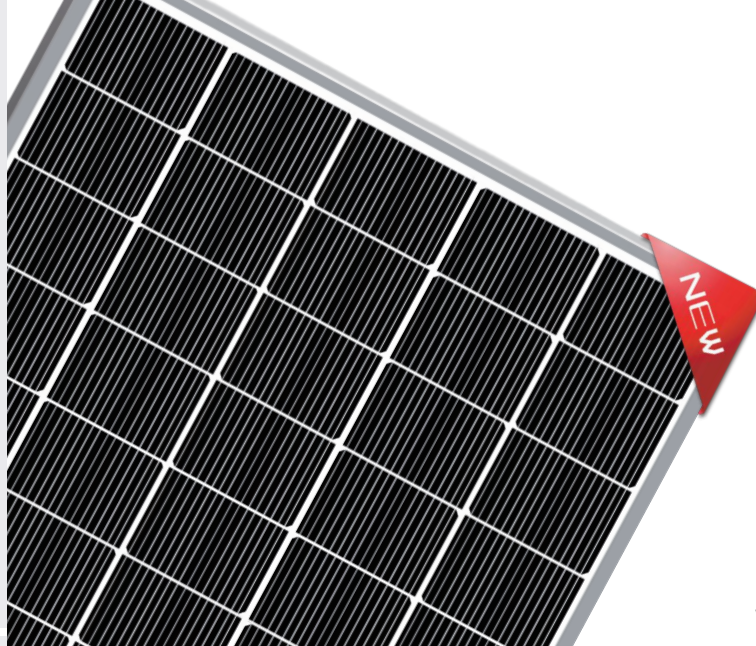
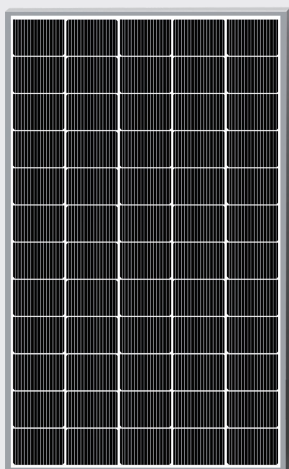




RESUN SOLAR ENERGY CO.,LTD.



WWW.RESUNSOLAR.COM



**60 Cells**

Mono 5\*12 180\*130mm

**340W**

Power Output

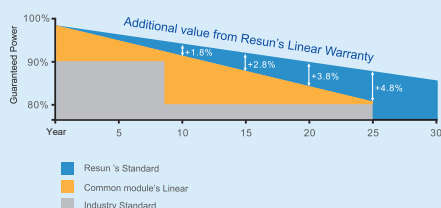
**20.90%**

The Highest Efficiency

**0~+5W**

Tolerance

**0.5% Annual Degradation  
over 30 years**



**LINEAR PERFORMANCE WARRANTY**

**12 Year Product Warranty**

**30 Year Linear Power Warranty**

## RSM330-340M

RSMXXXM HALF-CELL series is produced with high efficiency multi-busbar cells, which can reduce the module internal power loss to improve its conversion efficiency, as well as lower the failure risk caused by cracks and broken busbar to enhance the module reliability. Combined with half-cell technology, the module is highly resistant to hot-spotcrisis caused by shadow effect.



### High Reliability

SMBB technology can effectively reduce the reliability risk caused by cells cracks and broken busbar.



### Anti-PID Resistance

Prominent anti-PID performance reduces the power degradation, leading to higher energy yield and lower LCOE.



### Durability Against Extreme Conditions

Certified to resist high salt mist and ammonia conditions.



### High Efficiency

SMBB technology can reduce the module internal power loss to improve the module conversion efficiency significantly.



### Low-Light Performance

With high transmittance and anti-reflective 3.2mm tempered glass,the module has stronger performance under low light circumstances.



### High Mechanical Strength

Certified to withstand: high wind load(2400Pa) and snow load(5400Pa).

## Full range of products and certification systems

ISO 9001/14001 TUV PID-FREE CE IEC 61215/61730/61701/62716

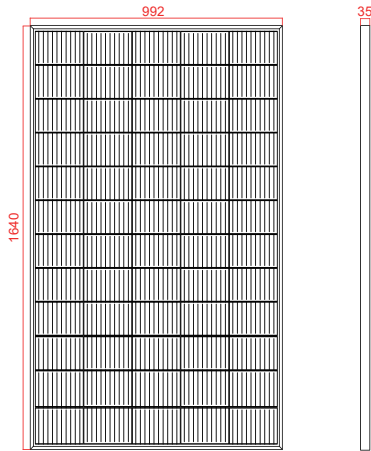


# RSM330-340M

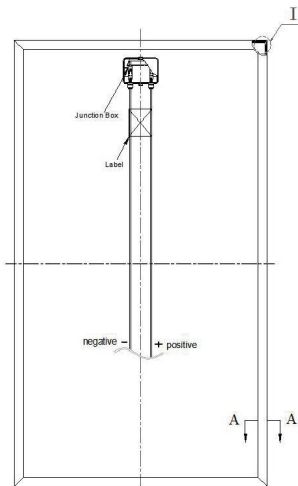


GLOBAL PROFESSIONAL PV PRODUCTS INTEGRATED SOLUTIONS SUPPLIER

Dimension of PV Modules Unit: mm

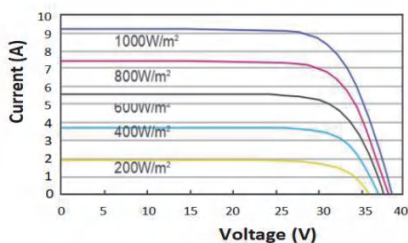


Front

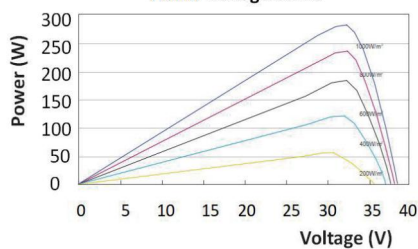


Back

Current-Voltage Curve



Power-Voltage Curve



## ELECTRICAL DATA(STC)

Rated Power in Watts-Pmax(Wp)	330	340
Open Circuit Voltage-Voc(V)	42.10	42.30
Short Circuit Current-Isc(A)	9.98	10.20
Maximum Power Voltage-Vmp(V)	34.96	35.16
Maximum Power Current-Imp(A)	9.44	9.67
Module Efficiency	20.28%	20.90%

STC: Irradiance 1000 W/m<sup>2</sup>, Cell Temperature 25°C, Air Mass AM1.5 according to EN 60904-3.

## ELECTRICAL DATA(NOCT)

Maximum Power-Pmax(Wp)	246.20	253.64
Open Circuit Voltage-Voc (V)	39.45	39.64
Short Circuit Current-Isc(A)	8.06	8.24
Maximum Power Voltage-Vmp(V)	32.56	32.75
Maximum Power Current-Imp(A)	7.56	7.75

NOCT: Irradiance at 800 W/m<sup>2</sup>, Ambient Temperature 20°C, Wind Speed 1m/s.

## MECHANICAL DATA

Solar cells	Mono-crystalline 182*130mm, Multi Bus bars
Cell configuration	60cells(5*12)
Module dimensions	1640*992*35mm
Weight	18.0kg
Front Cover	3.2mm Tempered Glass
J-BOX	IP68
Cable	4mm <sup>2</sup> (IEC)/12AWG(UL),900mm
Connectors	MC4 or MC4 Comparable

## TEMPERATURE & MAXIMUM RATINGS

Nominal Operating Cell Temperature(NOCT)	45°C±2°C
Temperature Coefficient of Voc	-0.32%/°C
Temperature Coefficient of Isc	0.05%/°C
Temperature Coefficient of Pmax	-0.39%/°C
Operational Temperature	-40~+85°C
Maximum System Voltage	1500V(IEC)/1500V(UL)
Max Series Fuse Rating	20A
Limiting Reverse Current	20A

## PACKAGING CONFIGURATION

	40HQ
Number of modules per container	952pcs
Package	31pcs/pallet, 2pcs/carton
Package Number	28pallets + 42 cartons

Address: Room 606, No. 13, Yongshang Garden, Jinfeng Road, Mudu Town, Wuzhong District, Suzhou, Jiangsu Province, China  
E-mail: info@resunsolar.com  
Tel: +86 512-66292101